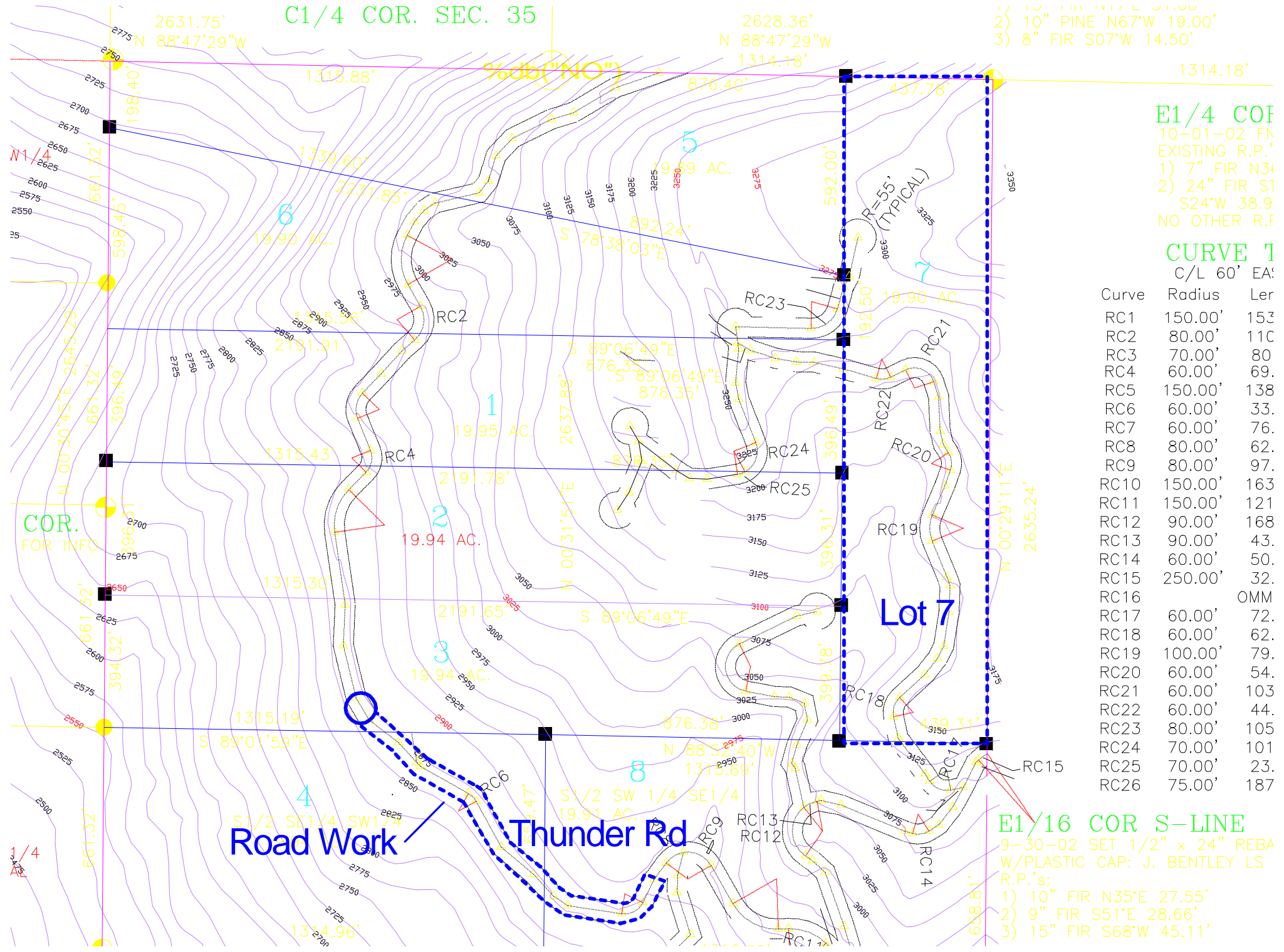


C1/4 COR. SEC. 35



- 1) 10" FIR N17°E 31.00'
- 2) 10" PINE N67°W 19.00'
- 3) 8" FIR S07°W 14.50'

E1/4 COI

- 10-01-02 FM EXISTING R.P.'s:
- 1) 7" FIR N31°E 24.00'
 - 2) 24" FIR S124°W 38.9'
- NO OTHER R.P.'s

CURVE 1

C/L 60' EAST

Curve	Radius	Ler
RC1	150.00'	153
RC2	80.00'	110
RC3	70.00'	80
RC4	60.00'	69
RC5	150.00'	138
RC6	60.00'	33
RC7	60.00'	76
RC8	80.00'	62
RC9	80.00'	97
RC10	150.00'	163
RC11	150.00'	121
RC12	90.00'	168
RC13	90.00'	43
RC14	60.00'	50
RC15	250.00'	32
RC16		OMM
RC17	60.00'	72
RC18	60.00'	62
RC19	100.00'	79
RC20	60.00'	54
RC21	60.00'	103
RC22	60.00'	44
RC23	80.00'	105
RC24	70.00'	101
RC25	70.00'	23
RC26	75.00'	187

E1/16 COR S-LINE

- 9-30-02 SET 1/2" x 24" REBAR W/PLASTIC CAP: J. BENTLEY LS R.P.'s:
- 1) 10" FIR N35°E 27.55'
 - 2) 9" FIR S51°E 28.66'
 - 3) 15" FIR S68°W 45.11'

COR. FOR INFO

Lot 7

Road Work

Thunder Rd

- 1) 10" FIR N35°E 27.55'
- 2) 9" FIR S51°E 28.66'
- 3) 15" FIR S68°W 45.11'